

Institute of Transportation Engineers



Hawaiian
Electric



What do you think of when you hear Electric Vehicle?

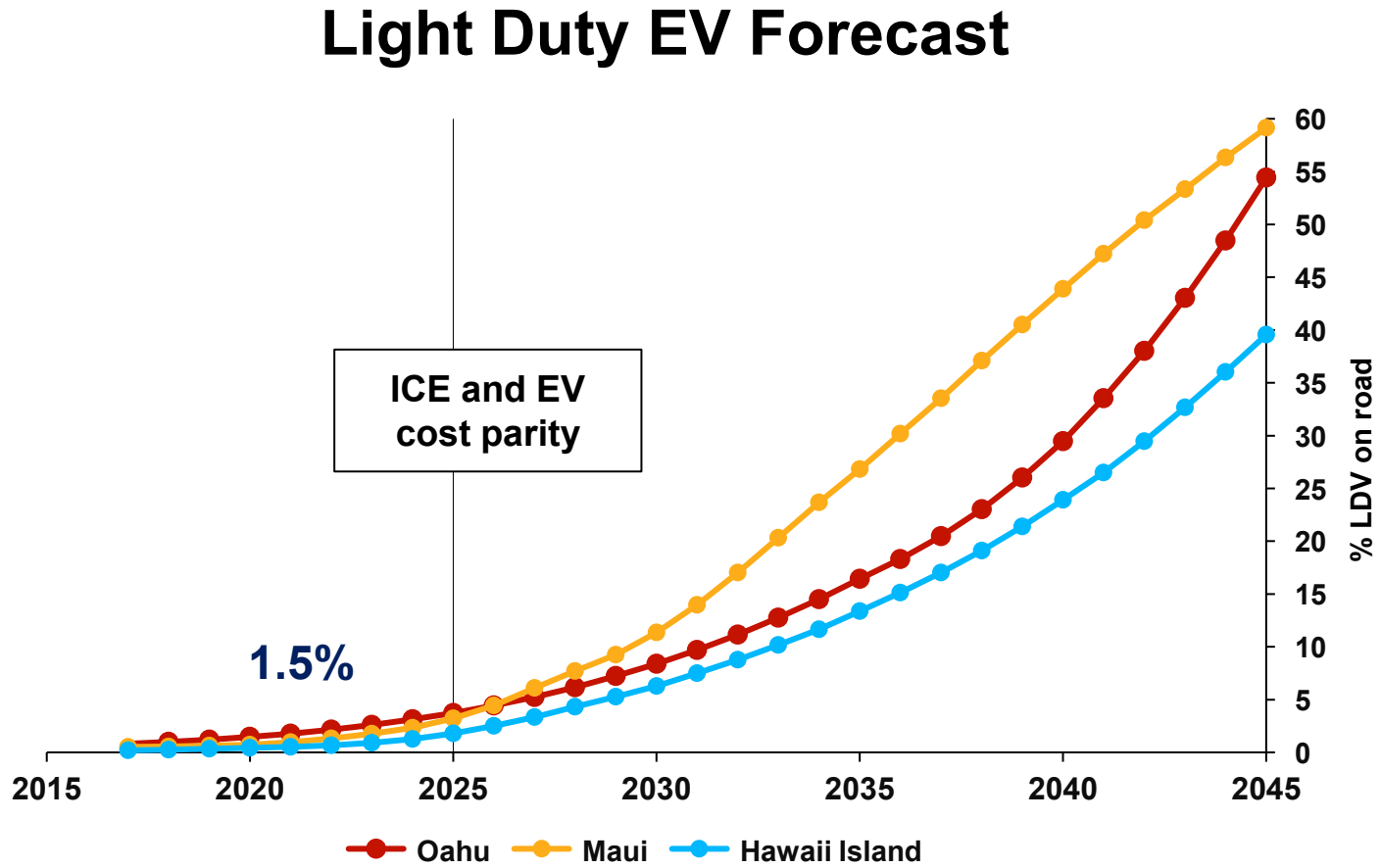




We also
think
of these!



Hawaii among the highest EV adoption rates per capita (15,000+ EVs are registered in Hawaii)



Source: Hawaiian Electric Electrification of Transportation Roadmap



'No turning back:' Biden signs order targeting half of all vehicles sold in US to be zero-emissions by 2030

Joey Garrison and Courtney Subramanian USA TODAY
Published 5:00 a.m. ET Aug. 5, 2021 | Updated 6:07 p.m. ET Aug. 5, 2021



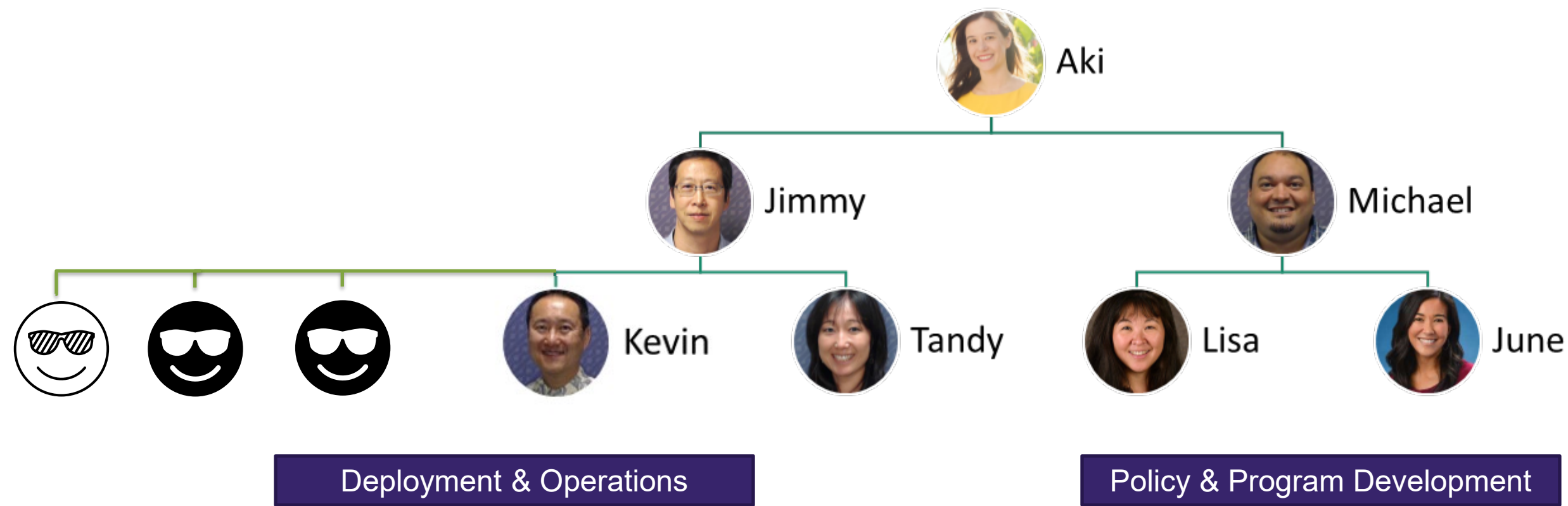
To reach state's 100% clean energy goal, Ige signs bills to bolster use of electric vehicles

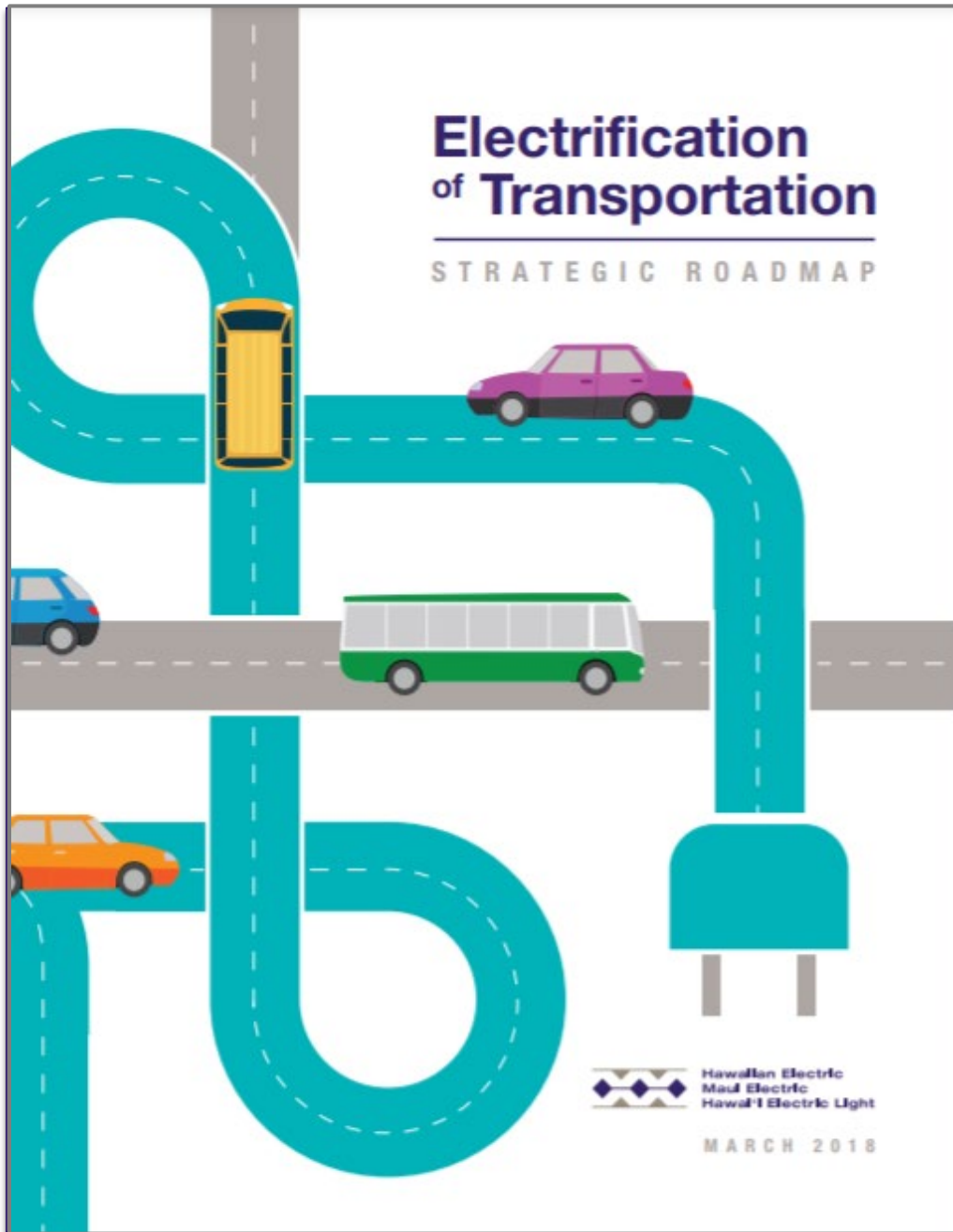
Hawaii to convert light-duty vehicles to electric by 2035

NEWSNATIONAL NEWS • News

U.S. automakers pledge huge increase in electric vehicles

Who We Are – Electrification of Transportation (EoT)





Our Roadmap

1. Education & Outreach
2. Electrify Hawaiian Electric Fleets
3. Lower EV purchase costs
4. “Smart” Charging
5. MUD Charging
6. Workplace Charging
7. Public Charging
8. Tourism Industry
9. Electric Buses
10. Medium- & Heavy-Duty Vehicles

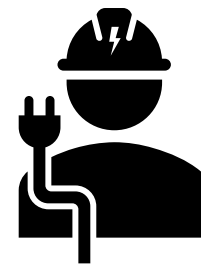
What We Do



Public
Charging



Rates



Charging
Infrastructure





Public Charging Network



EV Charging Options



LEVEL 1 (home)

CHARGING TIME

3-5 miles of range per hour

LEVEL 2 (home/public)

CHARGING TIME

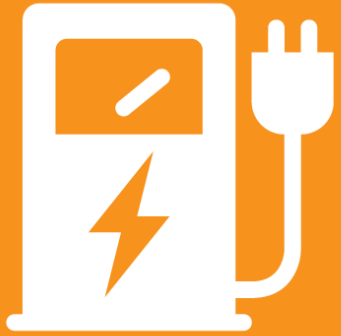
12-25 miles of range per hour

DC FAST CHARGE (public)

CHARGING TIME

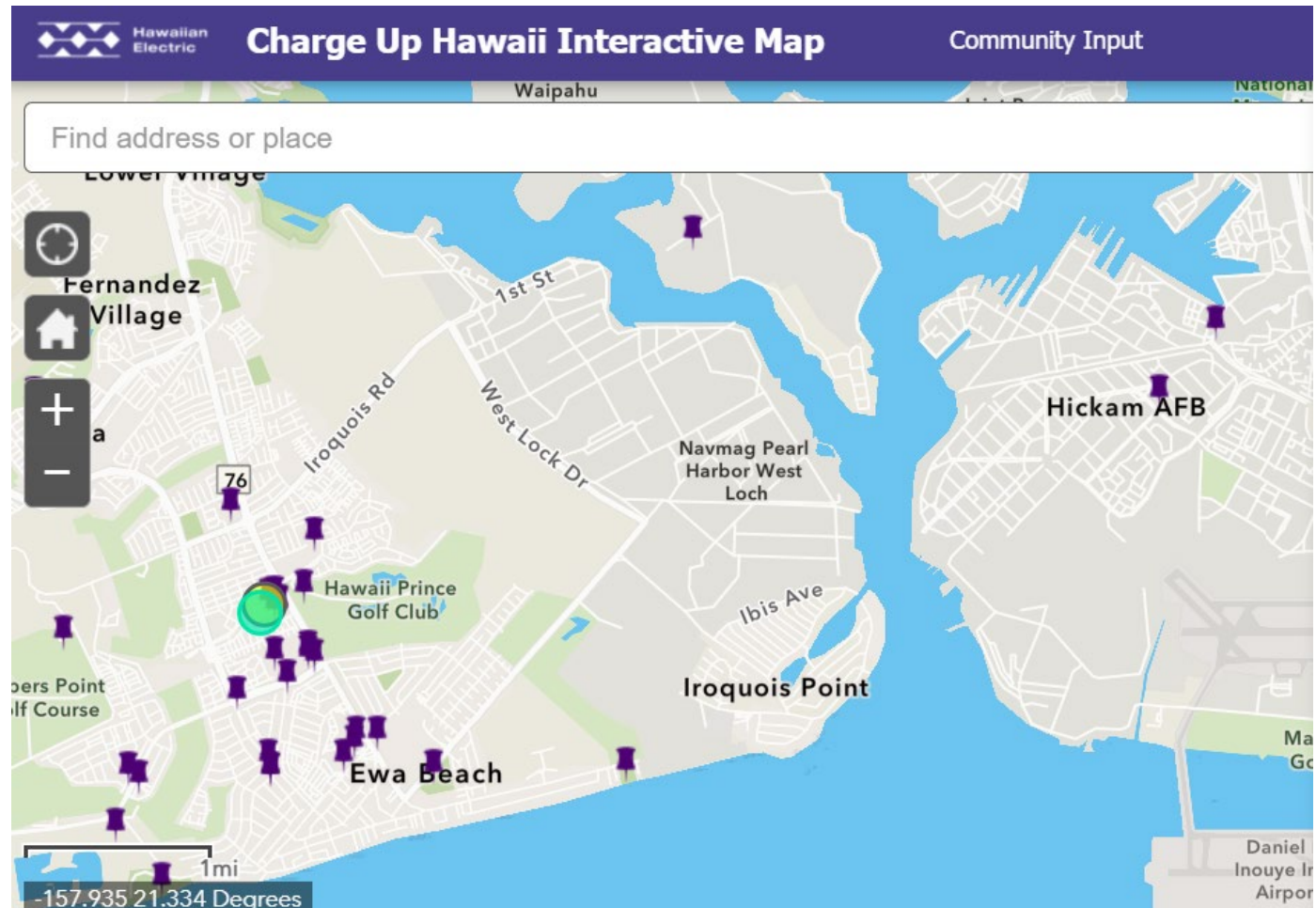
Up to 150 miles of range per hour

Charge Up Hawaii – www.chargeuphi.com



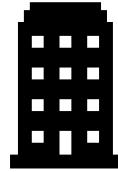
Let us know where
you'd like to see
additional EV
charging stations
in your community

#ChargeUpHI





Charging Infrastructure

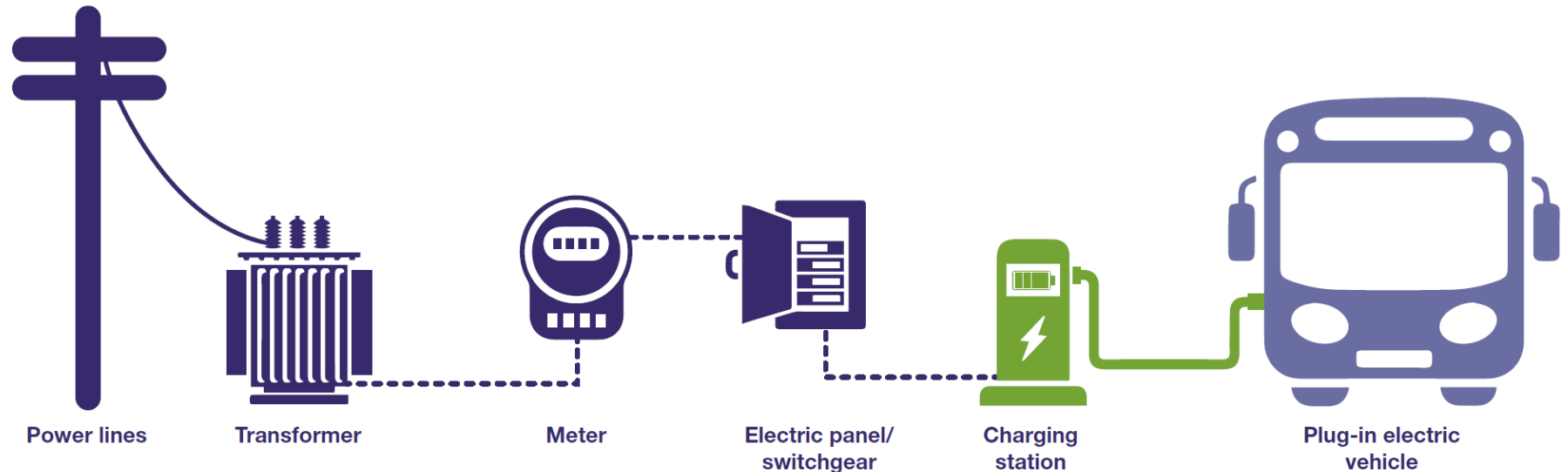


Homes
Multiunit dwelling



Businesses/ Schools

- Bus operators
- Company fleets
- Workplace charging



Hawaiian Electric pays for, constructs, owns and maintains electrical infrastructure to the point of interconnection with the customer's charging equipment.

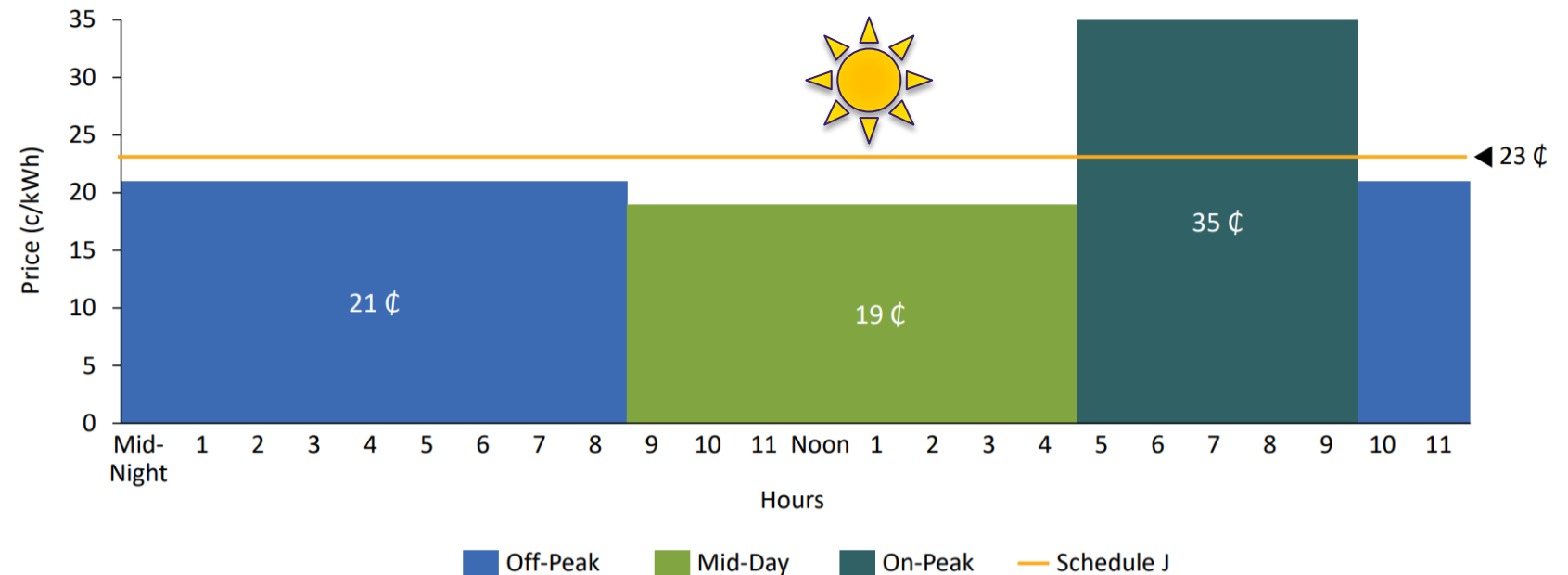
Customer pays for, installs, owns and maintains the charging equipment



Rates

Charging encouraged when renewable energy is abundant

Oahu E-BUS - J Compared to Schedule J* (For Illustrative purposes)



*Reflects January 2020 electric rates with applicable surcharges.

Stay in Touch!



Sign up for our e-newsletters

<https://pages.hawaiianelectric.com/ev-customer-survey>



EV Questions?

GoEV@hawaiianelectric.com





**Hawaiian
Electric**

Mahalo

Contact: Aki.marceau@hawaiianelectric.com